





NOTE:

- ALL SIDEWALKS - CROSSWALKS AND BUS STOPS WILL REMAIN OPEN
- TRAFFIC CONTROL WILL ASSIST WITH DRIVEWAYS AFFECTED BY WORK ZONE CLOSURE
- SPEED LIMIT ON BAILEY ROAD AND MATHESON ROAD IS 50 KM PER HOUR
ALL SIGNS WILL BE PLACED ON WINDMASTER STANDS WITH FLAGS
- ADVANCE WARNING SIGNS WILL BE PLACED ON ALL INTERSECTING SIDE STREETS WHEN REQUIRED

Canadian Utility Construction
 Jon Gray 604-841-7644

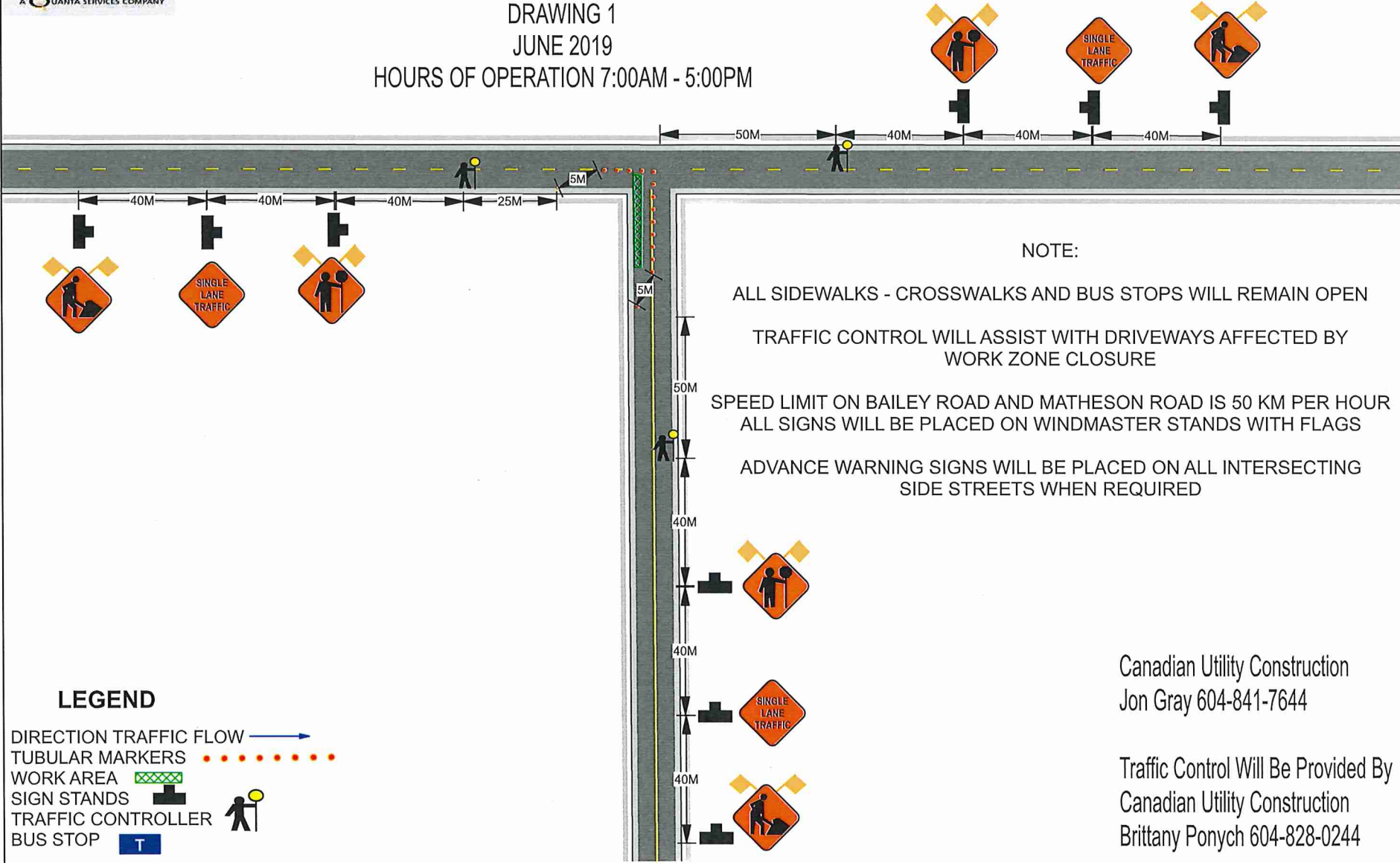
Traffic Control Will Be Provided By
 Canadian Utility Construction
 Brittany Ponych 604-828-0244

LEGEND

- DIRECTION TRAFFIC FLOW →
- TUBULAR MARKERS (red dotted line)
- WORK AREA 
- SIGN STANDS 
- TRAFFIC CONTROLLER 
- BUS STOP 



CANADIAN UTILITY CONSTRUCTION
FORTIS BC GAS MAIN INSTALLATION
6163 MATHESON ROAD, CHILLIWACK
JOB# 31064046
DRAWING 1
JUNE 2019
HOURS OF OPERATION 7:00AM - 5:00PM



NOTE:

ALL SIDEWALKS - CROSSWALKS AND BUS STOPS WILL REMAIN OPEN

TRAFFIC CONTROL WILL ASSIST WITH DRIVEWAYS AFFECTED BY WORK ZONE CLOSURE

SPEED LIMIT ON BAILEY ROAD AND MATHESON ROAD IS 50 KM PER HOUR
ALL SIGNS WILL BE PLACED ON WINDMASTER STANDS WITH FLAGS

ADVANCE WARNING SIGNS WILL BE PLACED ON ALL INTERSECTING SIDE STREETS WHEN REQUIRED

LEGEND

- DIRECTION TRAFFIC FLOW
- TUBULAR MARKERS
- WORK AREA
- SIGN STANDS
- TRAFFIC CONTROLLER
- BUS STOP

Canadian Utility Construction
Jon Gray 604-841-7644

Traffic Control Will Be Provided By
Canadian Utility Construction
Brittany Ponych 604-828-0244